

TECHNOLOGY WE LIVE





THE  
ADVANCED  
SOLUTION  
EXPERT

## TECHNOLOGY WE **NEED**, WE **CREATE** & WE **LIVE**

Microtek is a renowned player in the power product market of India. We are the most trusted and preferred brand in India. No wonder it's our best-in-class products that have helped us to achieve the position as India's most trusted & preferred brand. Being a technology innovator and a pioneer in the power backup industry of India, Microtek stands tall as an epitome in the space with its capability of making reliable and latest technology incorporated products that are well accepted and appreciated by household consumers & the industrial sector across the globe. We have etched a name for ourselves as one of the most dedicated, reliable and affordable power brands across five continents.

With the motto of 'Technology We Need, Technology We Create & Technology We Live', We strive to constantly innovate and upgrade our products to become the most recognized brand in the industry. For us, innovation and customer satisfaction are the most important factors. To achieve our goals, we have always worked to develop advanced technologies & innovative methods with our expert teams. It is not just the R&D, manufacturing, or sales that we focus on; we endeavour to excel in everything including distribution, marketing, and most importantly customer service.

Microtek today is offering many products which deal with Power Backup Solutions, Solar Solutions, Voltage Stabilizers, Wires & Cables, Circuit Protection Devices (MCB, DBs), E-Vehicle Chargers & Health Care range of products. All of these products are of premium quality and are crafted to cater to the unique requirements of the consumers. However, the factor that predominantly differentiates the organization is its unrivalled level after-sales service Pan India. Backed by a fully enabled customer care call centre, Microtek achieves the utmost level of customer satisfaction through its unparalleled team of professionals, processes & technology.



“INDIA’S MOST PREFERRED BRAND”  
&  
“MOST AWARDED BRAND”

MORE THAN **12** CRORE SMILING USERS



AVAILABLE GLOBALLY ACROSS **5** CONTINENTS

State of the art, global standard, fully automated manufacturing units for high quality products.

MORE THAN **60,000** DEALER NETWORK

Set up at various locations throughout the year to develop a strong relationship between the customers & company/dealers.

MORE THAN **1200** SERVICE ENGINEERS

A team of efficient and qualified engineers for faster resolution of complains within a turnaround time of 3 days.



**OUR VISION,  
OUR MISSION &  
CORE VALUES**





## OUR VISION

Provide innovative products and services with state of the art technology to enrich and uplift our customer's quality of life.

## OUR MISSION

- Ensure sustainability in our global operations.
- Establish a learning environment and constantly upgrade to state of the art technology to deliver the best value to our customers.
- Operate as an economically, socially and environmentally responsible organization.

## CORE VALUES

### LEADERSHIP

Be a market leader for all our products.

### STRIVE FOR EXCELLENCE

Continuously improve business processes, products and services with a focus on how to operate more effectively, efficiently in a user friendly manner.

### COMMITMENT

Honouring our word while demonstrating moral and ethical values in conducting business at all stages.

### LEARNING & DEVELOPMENT

Enhancing the knowledge and skills of our people in everything that we do to ensure a competitive competence level in the organisation.



**MANUFACTURING  
UNITS**



## STATE OF THE ART, GLOBAL STANDARD, FULLY AUTOMATED MANUFACTURING UNITS FOR HIGH QUALITY PRODUCTS

Quality delivers quality. With a staunch belief in this, we have given special emphasis to our manufacturing units and the equipment, processes, methods and technologies we use. We have set up state-of-the-art automatic manufacturing plants equipped with hi-tech machines like SMT, ICT and Automatic Assembly Lines to name a few.

- 10 fully automated plants in Parwanoo, Baddi (Himachal Pradesh) & Vishakhapatnam
- A state-of-the-art manufacturing facility in Global Locations
- Full-fledged R&D centre in New Delhi, India & in Global Locations
- 10000 sq. mt. area for production with a combined capacity of 1,30,000 units per month
- 200 highly skilled and dedicated engineers





HEALTH CARE



## HEALTHY YOU, HAPPY US

Today's scenario demands innovative health care solutions and that's where we come in, bringing safety and surety to every household and making the best, most advanced equipment suitable for homes, hospitals and various commercial establishments. Our range of healthcare products help you stay informed about the status of your health and that of your loved ones so that you are always safe, prepared and healthy.

- **Oxygen Concentrator**
- **Nebulizer**
- **Blood Pressure Monitor**
- **Digital Thermometer**
- **Non-Contact Infrared Thermometer**
- **Finger Pulse Oximeter**



OXYGEN  
CONCENTRATOR

# OXYGEN CONCENTRATOR

PORTABLE & EASY  
OXYGEN THERAPY.  
ANYTIME. ANYWHERE.







## OXYFlow 10M OXYGEN CONCENTRATOR

Microtek **OXYFlow 10M** is an oxygen concentrator, a type of medical device used for delivering oxygen to individuals with breathing-related disorders. Individuals whose oxygen concentration in their blood is lower than normal often require an oxygen concentrator to supplement the same.

Microtek **OXYFlow 10M** is designed by keeping maintenance costs in mind. For example, **OXYFlow 10M** has just two filters. The external filter can be changed in few minutes without special skills or tools and the internal micro disk filter is simply checked during routine maintenance procedures.

**OXYFlow 10M** concentrators are backed by value-added tools. From in-person and online training to financing options, you have what you need to succeed. Since Microtek offers a wide range of health care products and comprehensive support, we can be the source for many of your product needs.

**OXYFlow 10M** is compact, has a streamlined and integrated handle and weighs only 25 Kgs. Less weight means it is easier to move around and can lower shipping costs. Your patients will appreciate the compact, non-medical design of the **OXYFlow 10M** oxygen concentrator because it will fit right into their home environment. The unit is designed to be small, light, easy to transport and will fit into the trunk of a car. It has an easy-to-mount humidifier bottle connection and no patient filter.

Backed by our deep design knowledge, **OXYFlow 10M** is developed using only high-quality parts. With a recessed flow meter, metal cannula connector, strong plastic casing, proven sieve bed, and Pressure Swing Adsorption (PSA) technology, you may notice a reduction in repairs, complaints and unscheduled visits.



93% ±3%  
PURE OXYGEN



METAL BODY FOR  
RUGGED USE



DUAL FLOW  
FOR TWO USERS



BIG LCD  
DISPLAY



24X7 CONTINUOUS  
OPERATION



LOW PURITY &  
POWER FAILURE ALARM



GEO  
TAGGING\*



WORKING TEMP.  
5°C-40°C



PORTABLE &  
EASY TO CARRY



SUITABLE FOR  
HOME USAGE



Scan the QR Code to  
View Demonstration Video &  
Download User Manual

OXYGEN  
CONCENTRATOR



HEALTHY YOU,  
HAPPY US





## OXYFlow 5 OXYGEN CONCENTRATOR

Microtek OXYFLOW 5 is an oxygen concentrator, a type of medical device used for delivering oxygen to individuals with breathing-related disorders. Individuals whose oxygen concentration in their blood is lower than normal often require an oxygen concentrator to supplement the same.

It is designed by keeping maintenance cost in mind and consists of just two filters. The external filters can be changed on few minutes without any special skill and the internal micro filter is simply checked during routine maintenance procedures.



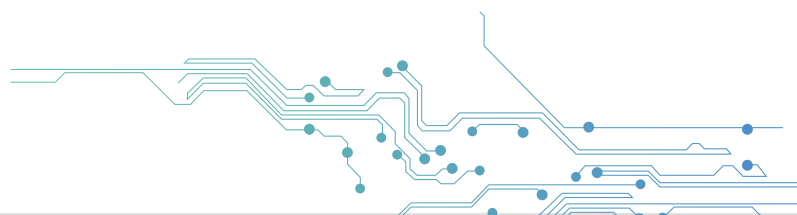
**93% ±3%  
PURE OXYGEN**



**BIG LCD  
DISPLAY**



**INNOVATIVE  
COOLING**





NEBULIZER

COMPRESSOR  
NEBULIZER

YOUR  
TRUSTED  
HEALTH  
PARTNER





Nebulizer

Microtek Nebulizer is a Medical Device that changes Medication from liquid to mist so you can inhale it into your lungs. Microtek Nebulizer comes in a table top model. It is ideal for home nebulization, clinics and hospitals. Plug-in to an electronic outlet & the device is ready to use.

#### TECHNICAL DATA

- |   |                                       |
|---|---------------------------------------|
| ● Liter Flow Range: $\geq 6.7\text{L}/\text{min}$           | ● Operation Pressure Range: 9.5–19psi |
| ● Average Nebulization Rate $\geq 0.25\text{mL}/\text{min}$ | ● Compressor Pressure Range: 22–58psi |
| ● Sound Level: $\leq 65\text{dB(A)}$                        | ● Product size: 205*150*100mm         |
| ● Particle Size: 0.5–10 $\mu\text{m}$                       | ● Unit weight: 1.3kg                  |
| ● Operating Humidity Range: 15 to 80% RH                    |                                       |



**BLOOD PRESSURE  
MONITOR**

**NOW QUICKLY MEASURE  
YOUR BLOOD PRESSURE  
WITH JUST A TOUCH.**







VOICE BROADCAST



- OPERATE WITH
- ADAPTER\* VIA MICRO-USB
  - TYPE-B CABLE\* (DC5V/500mA)
  - AA BATTERY
  - POWER BANK

## Blood Pressure Monitor

Microtek's Automatic Upper Arm Blood Pressure Monitor device uses an oscillometric method to measure the arterial blood pressure and pulse rate. The arm cuff is wrapped around the arm and automatically inflated by an air pump. The sensor of the device catches weak fluctuation of the pressure in the arm cuff produced by extension and contraction of the artery of the arm in response to each heartbeat. The amplitude of the pressure waves is measured and is displayed by a digital value. This device is easy-to-use and its accuracy will facilitate your daily blood pressure regimen.



SMART INFLATION



FAST MEASUREMENT



MOTION DETECTION



FAN-SHAPED ARM BAND



VOICE BROADCAST



ONE-BUTTON MEASUREMENT



IMPORTED CHIP



HD LARGE SCREEN



INTELLIGENT PRESSING



2\*192 SETS OF MEMORY



MALFUNCTION REMINDING



AUTO POWER-OFF



DIGITAL  
THERMOMETER



# YOUR PERSONAL HEALTH GUARD

It is an advanced technology product, which can measure the temperature of a human body accurately.

In present times, when we are living under the dark cloud of pandemic Covid-19, it can conveniently maintain the health status of your family members at anytime and anywhere and become your personal health guard.







## Digital Thermometer

# SALIENT FEATURES

- **Measuring Range:** 32°C-42.9°C / 90°F-109.9°F
- **Accuracy:** ±0.1°C / ±0.2°F
- **Measurement Time:** About 60 Secs
- **Memory:** Last reading can be seen
- **Alarm:** Beep sound on measurement complete, Low Temp., Over Temp. & Low Battery
- **Auto Shut Off**
- **Power Supply:** 1.5V Button Battery
- **Non Mercury:** (100% Safe)
- **Clinically Tested**
- **Easy-to-Read LCD Display**
- Can be used in Oral Cavity, Recta & under the Armpit

**NOTE: Before taking Oral, Axillary or Rectal temperature please read the enclosed pack insert.**



Auto Off



Including Battery



Including Protective Cover



Medical Device



Year Warranty



**NON-CONTACT  
INFRARED  
THERMOMETER**



15 cm

Non-Contact Infrared Thermometer  
MICROTEK  
Model: T0883C  
Range: 32.0°C - 102.4°C  
Resolution: 0.2°C  
CE ROHS





## Non-Contact Infrared Thermometer

Advanced technology products that can measure the temperature of a human body by receiving the infrared energy emitted from the human body. It can also measure the temperature of a room and any object. It is ultra-fast, accurate and switchable with a fever alarm.



MEASURES TEMPERATURE FROM DISTANCE BETWEEN 1 TO 15 CM



3-IN 1 MEASUREMENT BODY, OBJECT & ROOM TEMPERATURE



CALIBRATION TECHNOLOGY FOR ACCURATE MEASUREMENT

### ✓ Measurement Method

Non-Contact

### ✓ Measuring Distance

1 to 15 cm\*

### ✓ Measurement Range

Temperature 32.0°C~ 42.9°C  
(89.6°F~109.2°F)

### ✓ Resolution

0.2°C / 0.36°F

### ✓ Working Conditions

10.0°C~50.0°C (50°F~122°F) RH<85%

### ✓ Storage Conditions

-20°C~55°C (-4°F~131°F) RH<95%

### ✓ Power

2 AA (No.5) Alkaline Batteries DC-3V

### ✓ Power Dissipation

Shutdown State: <10uW

Boot State: 30mW

### ✓ Low Voltage Indication

<2.5V will be displayed as Low Voltage

### ✓ Display

Tricolor Backlit Screen

### ✓ Temperature of the Unit

Degrees Celsius or Fahrenheit

### ✓ Automatic Shutdown Time

Within 20 seconds

### ✓ Dimensions

170 x 110 x 50 mm

### ✓ Net Weight

105 Gms



FINGER PULSE  
OXIMETER

FINGERTIP PULSE OXIMETER

NOW MEASURE  
YOUR PULSE RATE  
AND OXYGEN LEVEL,  
ANYTIME, ANYWHERE.





## Finger Pulse Oximeter

A quick, simple and accurate way to check Pulse Rate, Blood Oxygen Saturation Levels and Perfusion Index. The comfortable silicon padded finger clamp with a simple one-button design allows for easy operation. A small portable size makes it convenient to use and carry. It is an ideal way to monitor the health status at home, especially during these COVID-19 times where regular monitoring of the patient is vital.



%  
**SpO2** BLOOD OXYGEN SATURATION (SpO2%)

bpm  
**PR** PULSE RATE (PRbpm)

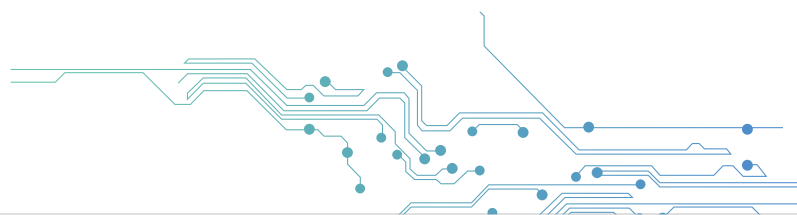
%  
**PI** PERFUSION INDEX (PI%)

**ACCURATE & RELIABLE RESULTS**

**QUICK & EASY RESULTS**

**SUITABLE FOR ALL**

**DUAL COLOR OLED DISPLAY**



**ELECTRICAL  
SOLUTIONS  
WIRES & CABLES**



## **WE HELP YOU STAY CONNECTED**

So that your work, home and life run safe, secure and uninterrupted, our range of wires and cables offers an extensive variety. Whether it's low-leakage or flame retardant or halogen, whether for something as small as a home appliance or something as complex as a telephone switchboard, we have it all covered.

- **Lead Free Flame Retardant (LFFR)**
- **Flame Retardant Low Smoke & Halogen (FRLSH)**
- **Zero Halogen Low Smoke (ZHLS)**
- **Three Core Flat Submersible Cables**
- **Multi-core Round Flexible Cables**
- **Co-Axial TV Cables**
- **Telephone Switchboard Cable**
- **LAN Cables**
- **CCTV Cables**
- **Speaker Cables**
- **Solar Cables**



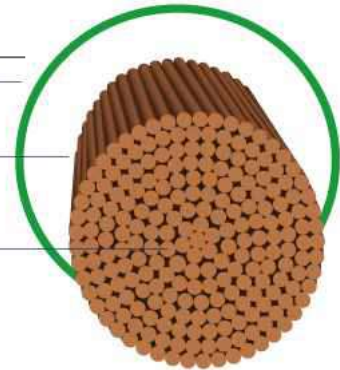
**LEAD FREE  
FLAME  
RETARDANT  
(LFFR)**



Skin Colour LF FR PV

Natural PVC

Multistrand Flexible  
Copper Conductor



### Lead Free Flame Retardant (LFFR)

LFFR wires are made of no-chemical Lead Free PVC insulation that ensures that they are safe for the environment. Its flame retardant property elevates the oxygen index which prevents the fire from spreading. They are used for internal electrification and power supply to all electrically connected equipment.

Note: Available in 90 meters in carton packing & 180 meters project length

\*\*Current Rating (Amp.) at 20 °C (as per IS-3961:1968-Part-II)

\*Conductor Shall be class-5 as per IS-8130:2013.

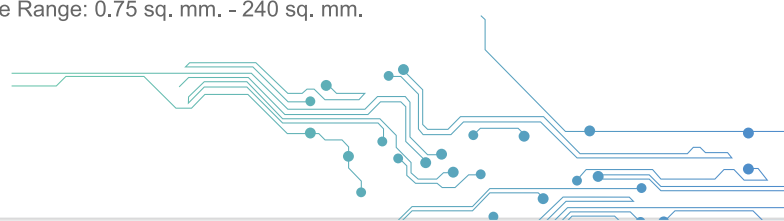
Conductor resistance as per IS-8130 :2013 is the governing criteria

Conductor : Plain annealed copper conductor as per IS-8130:2013

Insulation : Primary - Natural LF PVC with FR property  
Secondary - Skin colour coated LF PVC with FR property

Colour : Red/Black/Blue/Yellow/Green

Available Range: 0.75 sq. mm. - 240 sq. mm.





**FLAME  
RETARDANT  
LOW SMOKE &  
HALOGEN WIRES**



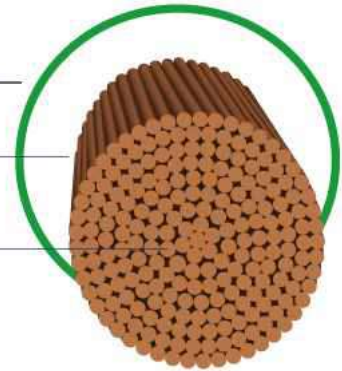




Skin Colour PVC

Natural PVC

Multistrand Flexible  
Copper Conductor



### Flame Retardant Low Smoke & Halogen Wires

For internal electrification in commercial buildings  
with restricted ventilation

- High oxygen Index
- Self-Extinguishing Property

Conductor : Plain annealed copper conductor as per IS-8130:2013

Insulation : Unicolour FRLS-H PVC with one longitudinal line"

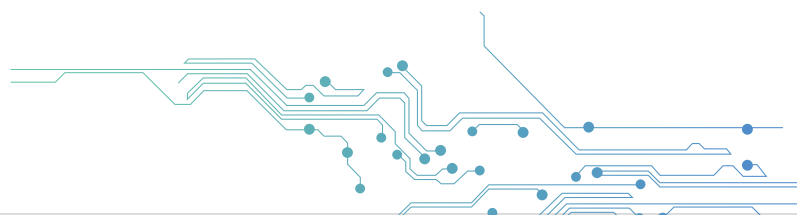
Colour : Red/Black/Blue/Yellow/Green

Any other colour on specific request can also be supplied.

Current Rating (Amp.) at 20 °C (as per IS-3961:1968-Part-II)

---

Available Range: 1.0 Sq. mm to 6.0 Sq. mm



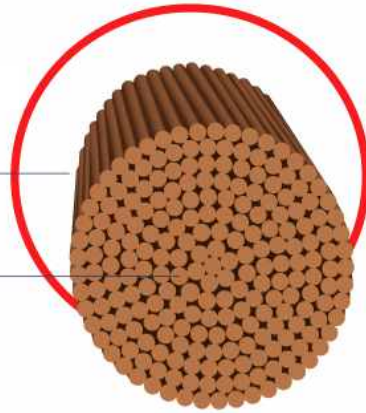
ZERO HALOGEN  
LOW SMOKE  
WIRES





Zero Halogen Low  
Smoke Polyme

Multistrand Flexible  
Copper Conductor



### Zero Halogen Low Smoke Wires

For internal electrification and power supply to  
all electrically connected equipment

- Non-Toxic
- Environment-Friendly

Conductor : Plain annealed copper conductor as  
per IS-8130:2013

Insulation : Unicolour ZHLS polymeric Insulation

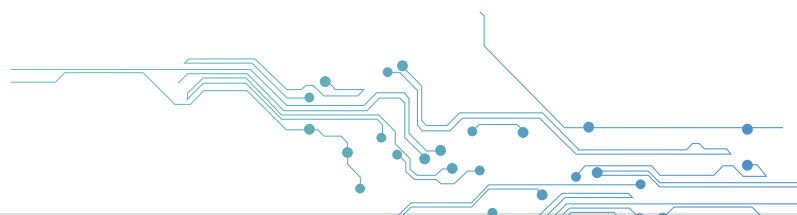
Colour : Red/Black/Blue/Yellow/Green

Any other colour on specific request can also  
be supplied.

\*Current Rating (Amp.) at 20 °C (as per  
IS-3961:1968-Part-II)

---

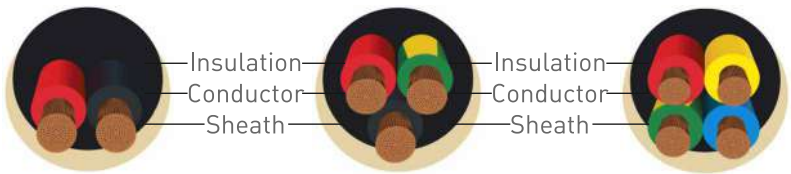
Available Range: 1.0 Sq. mm to 6.0 Sq. mm





**MULTI-CORE  
ROUND FLEXIBLE  
CABLES**





## Multi-Core Round Flexible Cables

These cables are ideal for internal and external electrification and power supply for a wide range of industrial as well as domestic applications.

Note: Available in 100 meters length with black outer sheath & in bigger packing on request. Any colour on specific request can be supplied, in economical run.

Conductor resistance as per IS-8130:2013 is the governing criteria.

Conductor shall be of Class-V as per IS-8130:2013

Core Identification:

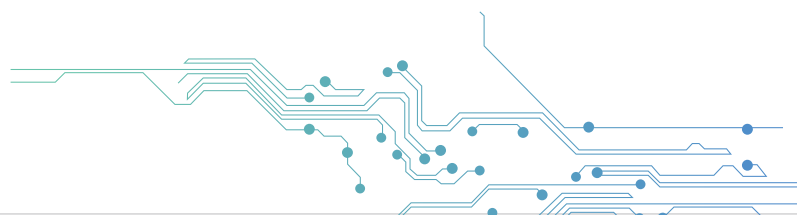
2 CORE : Red & Black

3 CORE : Red, Black & Yellow with Green line

4 CORE : Red, Yellow, Blue & Yellow with Green line

---

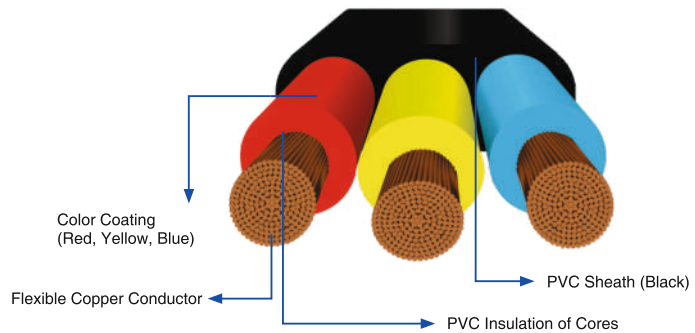
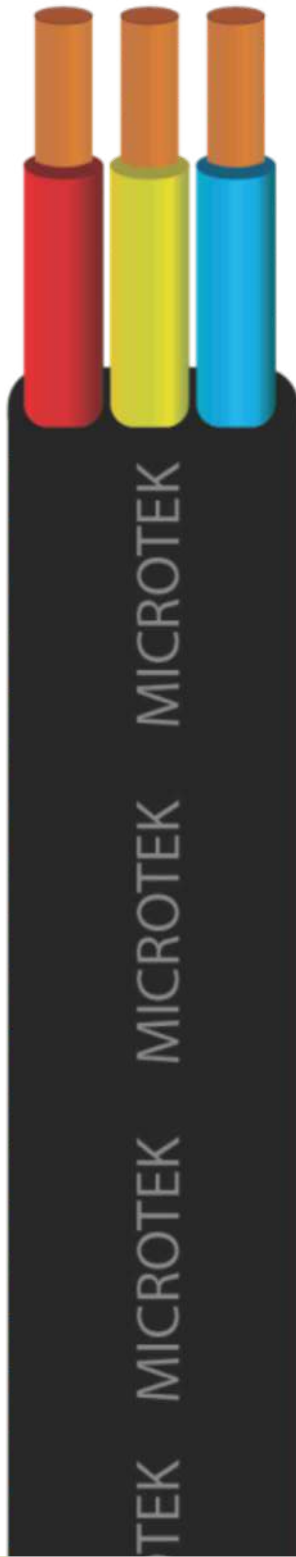
Available Range: 0.5 Sq. mm to 16.0 Sq. mm



THREE CORE  
FLAT SUBMERSIBLE  
CABLES







### Three Core Flat Submersible Cables

For electrification and power supply in underground, under-water or on a wet surface

- Highly Abrasion Resistant
- Excellent Insulation Properties

Note: Available in  $500 \pm 5\%$  meters packing in drums. Also available in 100 meters packing on request.

Conductor resistance as per IS:8130 is the governing criteria.

Conductor shall be of Class V as per IS-8130:2013.

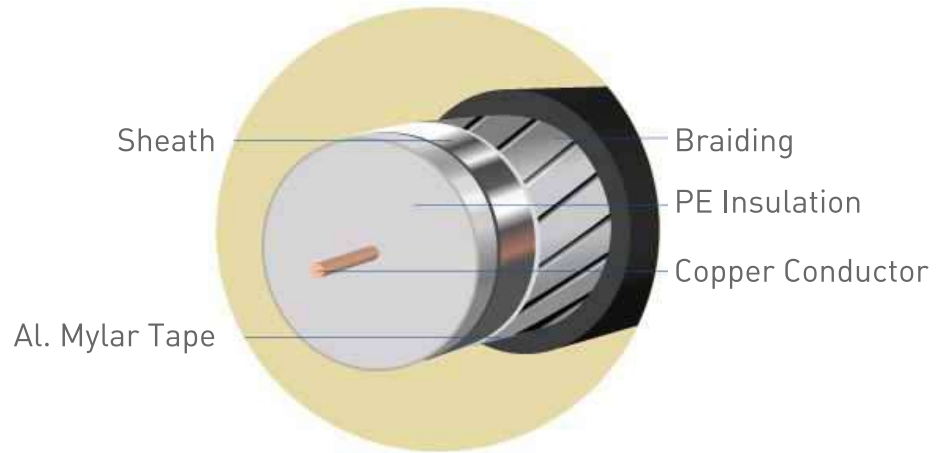
---

Available Range: 1.50 Sq. mm to 35.00 Sq. mm



CO-AXIAL  
TV CABLES





### Co-Axial TV Cables

The Co-Axial TV cables are our solid annealed bare copper cables that surpass the highest quality standards. They are eco-friendly, safe, long lasting and fire retardant. They provide high-quality picture and are not affected by weather which makes them ideal to use for internal & external electrification and power supply in cable TV operations, Computer networking etc.

Solid Annealed Bare Copper Safe & Reliable Fire Retardant Safe For Environment

---

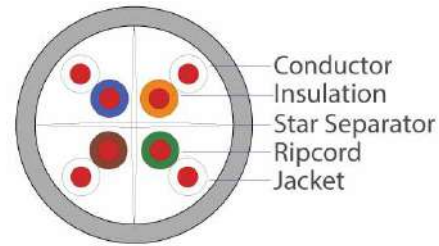
Size Available: RG-59, RG-6, RG-11





TELEPHONE  
SWITCH BOARD  
CABLE





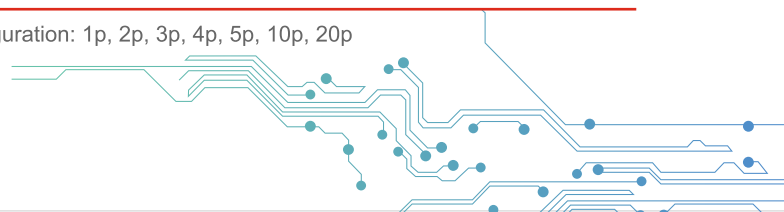
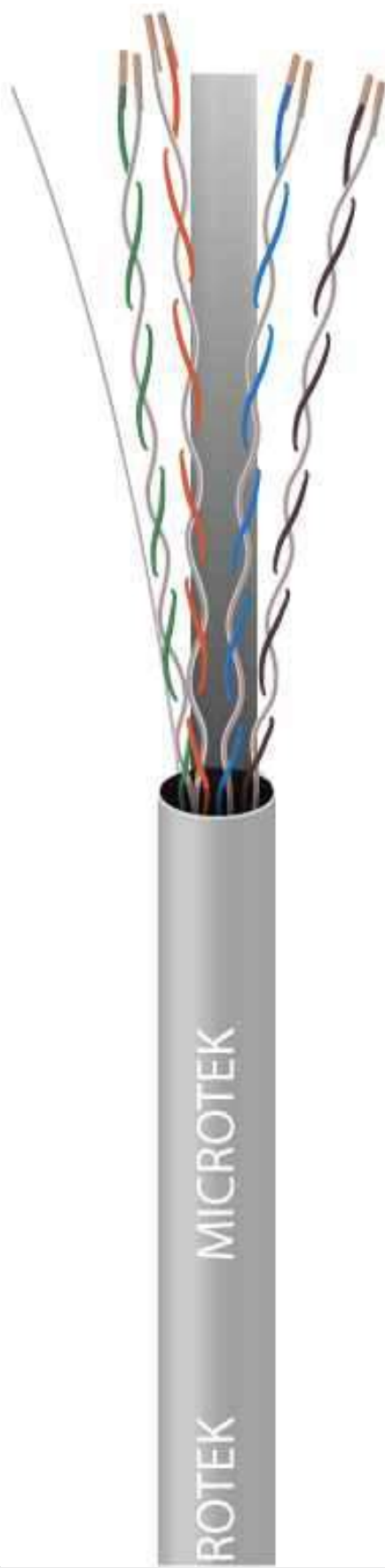
## Telephone Switch Board Cable

The Telephone Cables are made in conformity with TEC regulations. The high-class insulation adds to its longevity and stability properties. Its staggered layers of twisted wires ensure minimum crosstalk. Sizing and processing of conductor and insulated cores are done in a precisely controlled manner to have optimum values of capacitance, capacitance unbalances, image and cross talk attenuation, and characteristic impedance. They are used for internal & external electrification and power supply in all equipment involving telephones. High-Class Insulation Long Lasting & Stable Twisted Pair For Min. Cross Talk High Grade Copper

### Features

- Exceptional material properties and cable design
- High ACR values-providing low BER (Bit Error-Rate) Exceeds cat 6 Best transmission performance.
- Extremely high pair-balance-providing excellent EMC (Electromagnetic compatibility)
- Maximum noise immunity. ISO/IEC - 11801 Class E. UL-94V0 rated Plastics.
- Longer Cable segment Length. High speed data access
- Total end-to-end horizontal cabling solution
- Backwards compatible with Microtek Category 6 systems ensuring support for legacy applications
- Unshielded Twisted Cable
- Cable supports frequencies up to 250 MHZ.
- Cable supports data transfer speeds up to 1000Mbps - Gigabit
- Available in 100 Mtr coil/305Mtr Box packaging

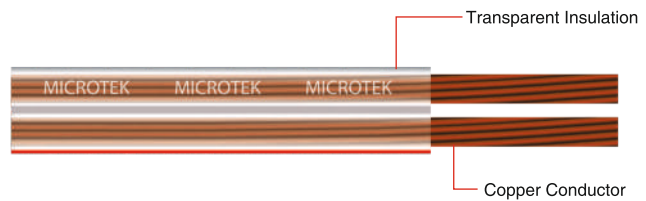
Configuration: 1p, 2p, 3p, 4p, 5p, 10p, 20p



**SPEAKER  
CABLES**







## Speaker Cable

Speaker Cables are used to make connection between loudspeaker and audio amplifiers within various sound instruments. In today's constructions, the new building code (like for Airports, Railway Platforms, Auditoriums, Offices, High-rise Apartments and Hospitals etc.), installation of speaker cables ensure a clear and distortion free voice with very low dB loss.

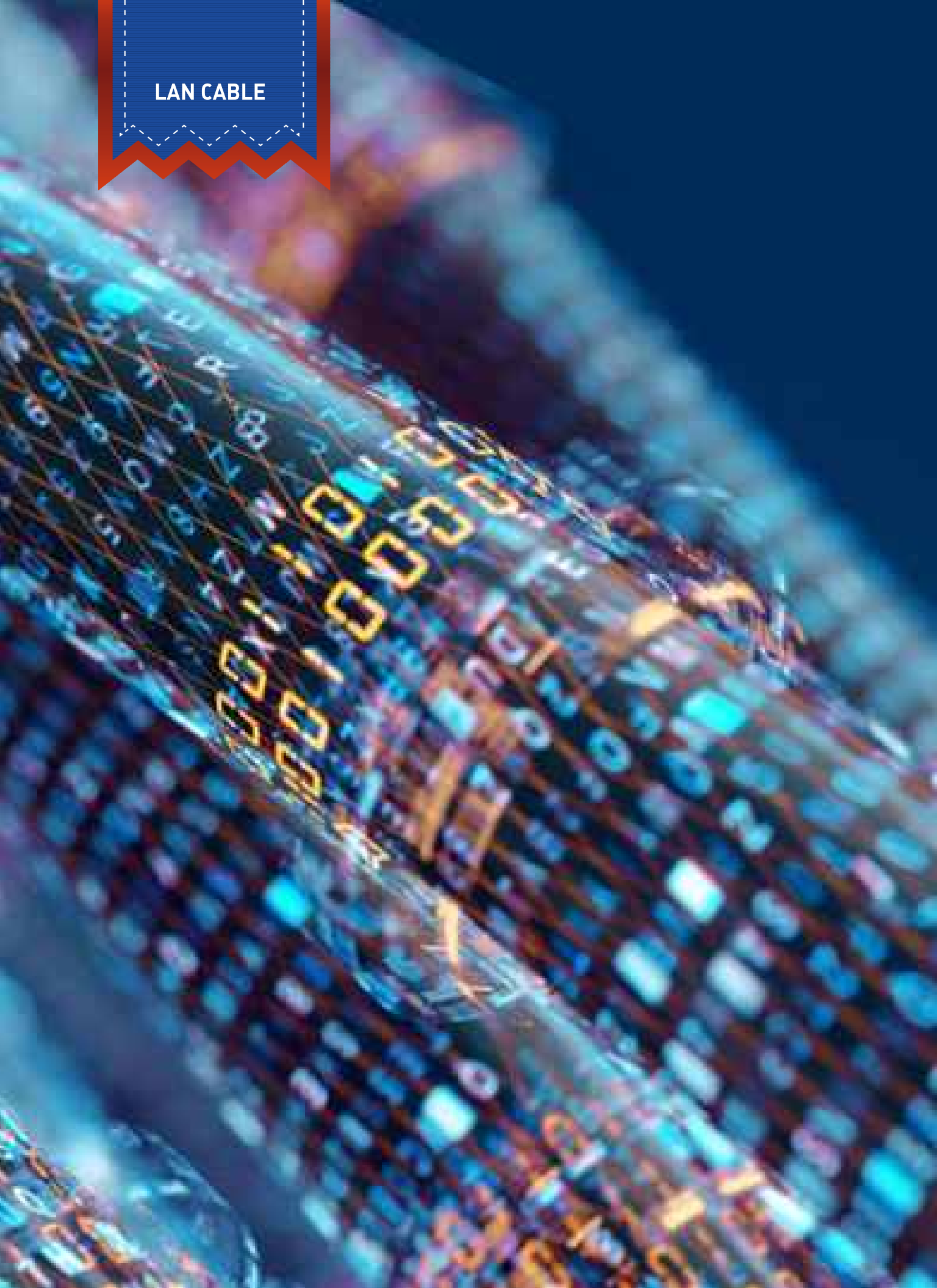
**Construction Details:** The twin parallel cable have the following construction with different coloring of insulation.

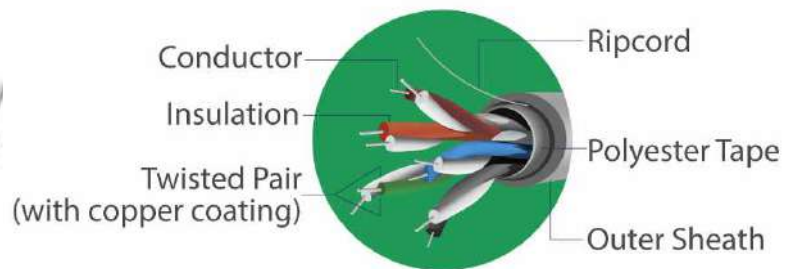
---

Size Available: 1 Sq. mm to 2.5 Sq. mm



LAN CABLE





### CAT 6 / CAT5E Cable

Microtek Networking Cables are bound to give great internet speed.

The cables are verified to the performance requirements of ISO/IEC 11801, TIA/EIA 568C.2.

Unshielded twisted pair (UTP) cable is used in many homes and business-based Ethernet networks.

We ensure to maintain high standards by individually twisting each pair to prevent interference from other devices on the network. All the cables pass fluke test and have high ACR value, EMC, and noise immunity.

They are used for networking and accessing high-speed networks and internet data.

#### Features

- Exceptional material properties and cable design
- High ACR values-providing low BER (Bit Error-Rate) Exceeds cat 6 Best transmission performance.
- Extremely high pair-balance-providing excellent EMC (Electromagnetic compatibility)
- Maximum noise immunity. ISO/IEC - 11801 Class E. UL-94V0 rated Plastics.
- Longer Cable segment Length. High speed data access
- Total end-to-end horizontal cabling solution





CCTV CABLE

# EXPERIENCE THE CONNECTIVITY & ACCESSIBILITY AT ITS BEST.



MINIMUM  
DISTORTION OR  
ATTENUATION



OPTIMIZES  
VIDEO  
QUALITY



SOLID  
ANNEALED  
BARE COPPER



STRONG SIGNAL  
STRENGTH WITH  
NO REFLECTION

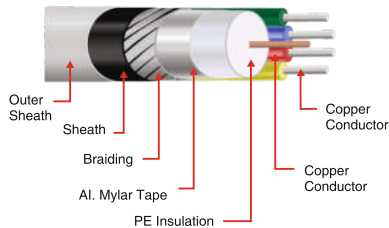
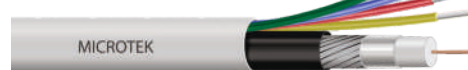


## CCTV Cable

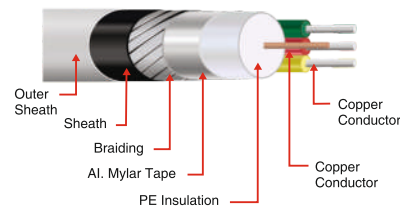
Microtek CCTV Cables are offered in two types namely 4+1 CCTV Cables and 3+1 CCTV Cable. These are designed to optimize the quality of video signals, which are transmitted through the Coaxial cable in the CCTV. Top most quality of construction of coaxial cable in Microtek CCTV cables ensures distortion free video signals. Thus, providing a clear picture over complete low frequency bandwidth of transmission in such applications.



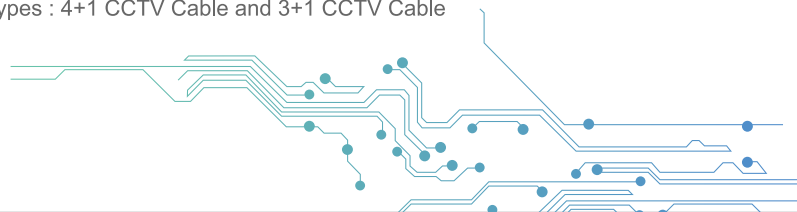
**Cross Section View for 4+1 CCTV**



**Cross Section View for 3+1 CCTV**



Two Types : 4+1 CCTV Cable and 3+1 CCTV Cable



SOLAR CABLE

# SOLAR CABLE

FOR THE

# BEST EFFICIENCY OF YOUR SOLAR SYSTEM



UV  
PROTECTION



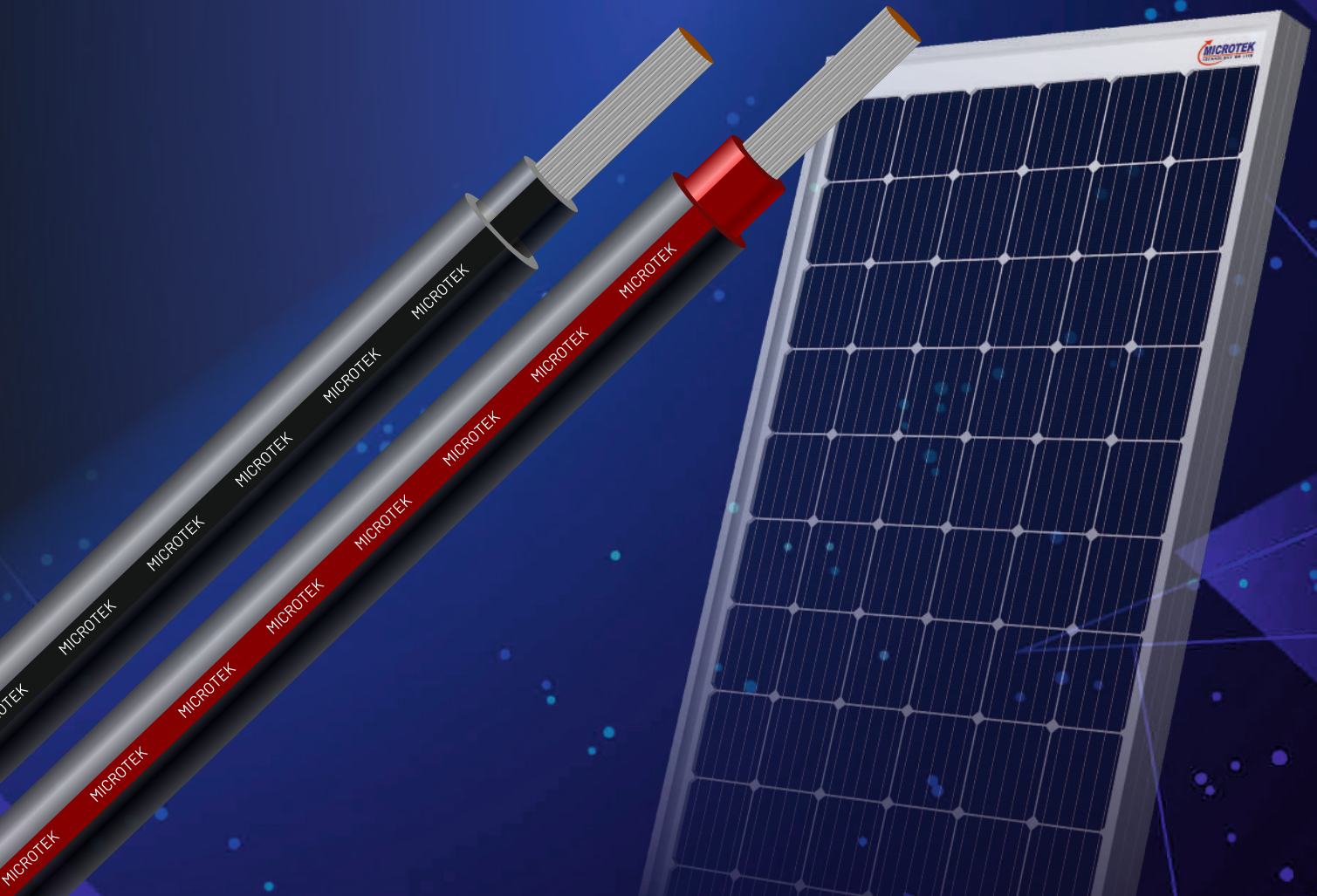
EASILY  
MOVABLE



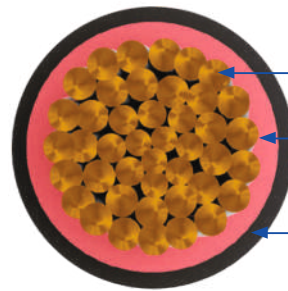
ENERGY  
EFFICIENT



OUTDOOR  
DURABILITY







Flexible tinned copper stranded class - 5  
Conductors as per IEC - 60228

Insulation - Cross linked  
XLPE, Natural Color

Outer sheath - UV Resistance  
PVC ST2 Compound Black Color

## Solar Cable

Solar Cables are intended for use in photovoltaic power supply systems and similar applications as free hanging, movable, fixed installation and buried in ground in constructional covered systems. These cables can be used indoor, outdoor and explosive areas, in industry and agriculture. They are suitable for applications in equipment with protective insulation.

Size Available: 2.50 Sq. mm to 25 Sq. mm



**CIRCUIT  
PROTECTION  
DEVICES**

TAKING SAFETY TO  
**THE NEXT LEVEL**



## **YOUR SAFETY IS OUR PRIORITY**

Evolving electrical distribution and protection needs across sectors has raised the significance continuity of service, enhanced operational safety, operating cost and convenience tremendously.

We at Microtek design every product keeping safety as the priority. All of our products are made using cutting-edge technology to ensure high level performance and safety. Microtek Miniature Circuit Breaker, Isolator, Residual Current Circuit Breaker, MCB Changeovers, Distribution Board, Offload Changeover Switches, Rewirable Fuse Switch Units and Mini DP MCB with enclosure ensure the flexible functionality and offer super aesthetic to the solution in regards to the ever changing need of electrical distribution in different sectors like residential, commercial and industrial. They are designed to proved improved operational safety, better continuity of service, lower operating cost and greater convenience.

- **Miniature Circuit Breaker**
- **Isolator**
- **Residual Current Circuit Breaker**
- **Distribution Board**





**MINIATURE  
CIRCUIT  
BREAKER (MCB)**





**PRO**

### Miniature Circuit Breaker (MCB)

The solution to the ever-changing need for electrical distribution in different sectors like residential, commercial and industrial. They are designed to provide improved operational safety, better continuity of service, lower operational safety and greater convenience.

- State of the art design
- Contact Indicator Window
- Dual Position Clamp
- Exceptional Endurance
- Breaking Capacity
- Trip-Free Mechanism
- Bi Connect Terminals

Range : 6A to 63A - 'C' Curve

Execution : Single Pole (SP), Single Pole & Neutral (SPN), Double Pole (DP), Three Pole (TP), Three Pole & Neutral (TPN) & Four Pole (FP)

Specification : IS / IEC 60898-1





ISOLATORS







**PRO**

## Isolators

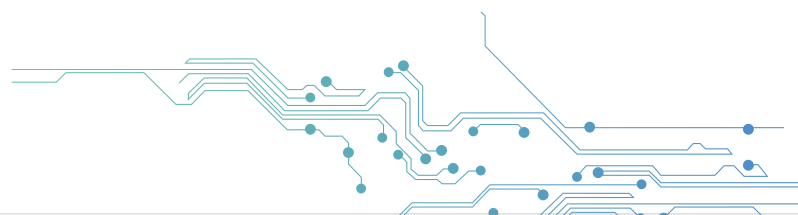
High-grade switch disconnectors used generally at both ends of circuit breaker. They make, carry and break currents under normal circuit conditions including overload or specific abnormal circuit conditions such as short circuit for a specified time.

- State-of-the-art-Design
- Bi Connect Terminals
- Dual Position Clamp
- Exceptional Endurance
- Protection IP-20
- Air Flow Channel

Range : 40A, 63A, 100A

Execution : Double Pole (DP), Three Pole (TP) & Four Pole (FP)

Specification : IS / IEC 60947-3



**RESIDUAL  
CURRENT CIRCUIT  
BREAKER (RCCB)**





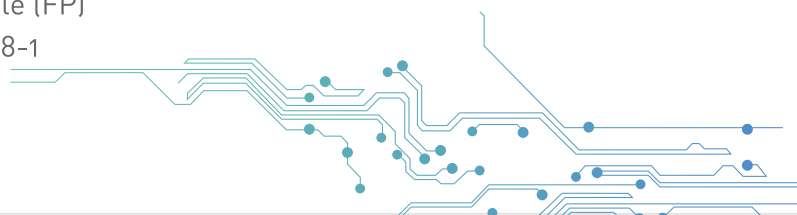
**PRO**

## Residual Current Circuit Breaker (RCCB)

A safety solution device designed to protect the consumers from fatal electric shocks and prevent fire caused by earth faults. The RCCB is a mechanical switching device that carries and breaks current under normal service conditions and causes the opening of the contacts when the leakage current attains a given value under specified conditions. The high-quality insulation adds to the safety of consumer.

- Simple and robust operating mechanism
- On/Off Printing on Knob for contact position indication.
- Dual Termination of Bus Bar as well as cable connection
- Advance neutral
- Trip Indication Window
- Protection IP-20
- Superior Sensitivity and Rapid Operating Mechanism

Range : 25A, 40A & 63A Type 'AC'  
Execution : Double Pole (DP) & Four Pole (FP)  
Specification : IS 12640 Part 1, IEC/EN 61008-1  
Sensitivity : 30mA,100mA,300mA





**DISTRIBUTION  
BOARD**



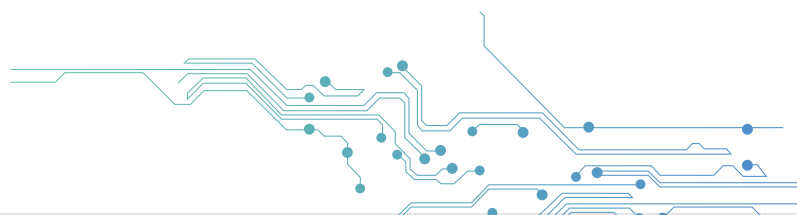


## Distribution Board

These are designed keeping in mind the performance and the looks. They ensure proper load distributed to all the devices. These elegantly designed and compliment the decor of your house and offices.

- Modern Design
- Box insertion Marks
- Durable Sliding Knob
- Key Type Mounting Holes
- Circuit Identification Labels
- Detachable Gland Plates

Range : SPN, TPN, VTPN, CONSUMER DB, METAL/PLASTIC Encl.  
Execution : Single Door, Double Door  
Specification : IS 13032  
IS 8623



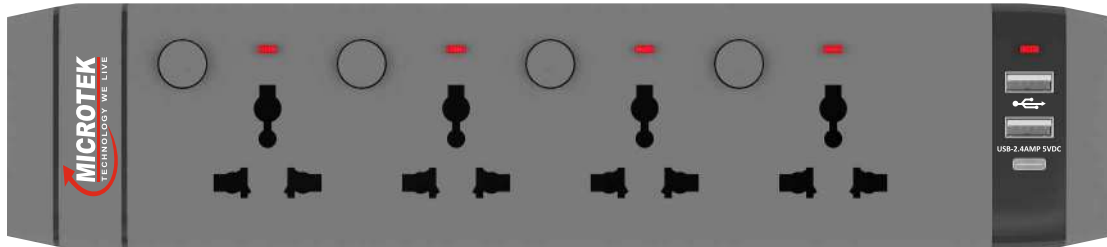


SPIKE GUARD





# CIRCUIT PROTECTION DEVICES



## Spike Guard

Microtek's spike guard is an appliance designed to protect electrical devices from voltage spikes. It comes with auto resettable overload protection, voltage surge protection and a cable length of 1.5 meter & 2.0 meter.



**6A 0.5SQMM WIRES'  
1500W, 240V AC**

Heavy Duty Spike Guards for wide applications in multiple appliances



**ON/OFF SWITCH**

Provided with main and individual On/Off switches for every connection



**SURGE PROTECTION**

High Power MOV protects appliances from any Voltage Surges



**OVERLOAD PROTECTION**

Replaceable Fuse for catching any current overload in circuit & ensuring safety of connected devices



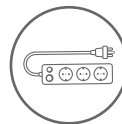
**CHILD SAFE SHUTTERED UNIVERSAL SOCKETS**

Wide usage compatible pins with shutter to safeguard children



**LED LIGHT'S**

Clear LED Indications for Fuse Blown identifications and circuit position.



**HEAVY DUTY BRASS CONNECTORS**



**USB CHARGING**

2.4A, 5V DC USB port with extra MOV protection for faster and safer charging

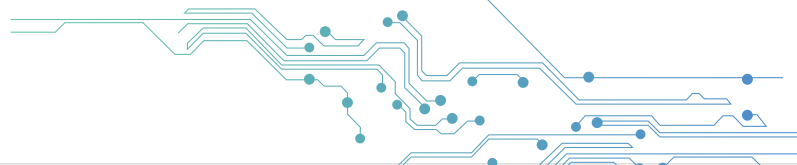
### AVAILABLE MODELS -

4 UNIVERSAL SHUTTERED SOCKETS + 1 SWITCH WITH INDICATOR

4 UNIVERSAL SHUTTERED SOCKETS + 4 SWITCHES WITH INDICATORS

4 UNIVERSAL SHUTTERED SOCKETS + 1 SWITCH WITH INDICATOR + 2 USB CHARGERS + 1 TYPE 'C' CHARGER

4 UNIVERSAL SHUTTERED SOCKETS + 4 SWITCH WITH INDICATOR + 2 USB CHARGERS + 1 TYPE 'C' CHARGER



**MULTI PLUG  
ADAPTOR**





### Multi Plug Adaptor

Microtek's multi-plug adaptor is made of high-quality polycarbonate that ensures it is not damaged very easily while an amazing power output makes the adaptor an amazing source of power consumption for all your devices and appliances.



Universal  
Socket



LED  
Indicator



Nickle Plated  
Brass Pins



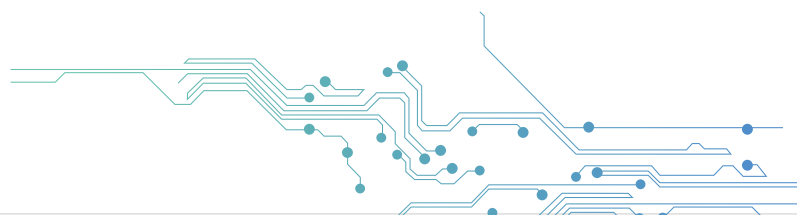
Fire Retardent  
Poycarbonate  
Material



6A (Max)  
240V AC, 50Hz



Sleek &  
Compact Design





**SOLAR  
SOLUTIONS**



## **LIGHTING UP LIVES WITH THE POWER OF THE SUN**

The sun is the natural source of solar energy. Our Solar range provides access to this free source of solar energy which is green, reliable, and pollution free. With energy conservation being the need of the hour, solar-energy based applications are like essentials and we make sure to get them to you.

- **OFF Grid Solar Solutions**
- **ON Grid Solar Solutions**
- **Hybrid Solar Solutions**
- **Solar Conversion Kit**
- **Solar Batteries**
- **Solar PV Modules**
- **Solar Power Generating System**
- **Zero Export Kit for Grid Tied Solutions**

OFF GRID  
SOLAR  
SOLUTIONS







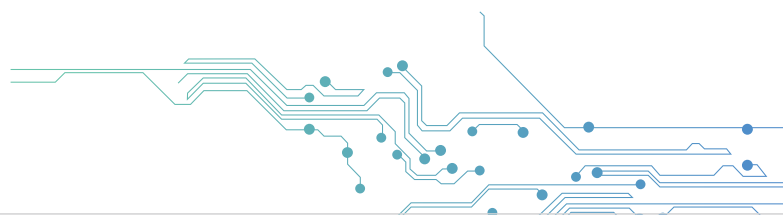
Solar MPPT PCU

High Efficiency Microtek Solar TRUE MPPT PCU are based on DSP technology.

- Pure DSP Sine Wave Technology.
- User Friendly Smart Multicolor LCD Display.
- State of the art and advanced MPPT Technology ensures 30% More Energy generation from Solar PV.
- Advance Real Time Clock Technology ensures optimum Saving of Electricity bill.
- Smart LCD displays total solar energy generation (in KWH).
- Provision for setting Critical Parameters of Solar thru Smart Front Panel
- Smart logic built in Software to maintain Battery Gravity and Enhance Battery Life.
- Battery Types Support : Tubular, SMF and Flat Plate .
- Remote monitoring thru Wi-Fi /LAN/GPRS (optional feature).

---

**AVAILABLE MODELS -**  
7.5KVA/96V & 10KVA/120V



OFF GRID  
SOLAR  
SOLUTIONS  
SOLAR MPPT PCU



SOLAR PCU MPPT 5KVA

- Advanced DSP Based Technology.
- Adaptive MPPT Logic for excellent power generation.
- Pure Sinewave Output.
- User Friendly LCD Display.
- Remote monitoring (Optional Feature).
- State of the art and advanced DSP based MPPT Technology ensures 30% More Energy generation from Solar PV.
- Advanced Charge Sharing ensures optimum Saving of Electricity.
- ECO mode / Grid mode / Mains mode selection.

---

AVAILABLE MODELS -  
5KVA/48V





Solar PWM PCU

Microtek SOLAR PCU is designed using latest state-of-the-art Technology for Better Performance and High Reliability.

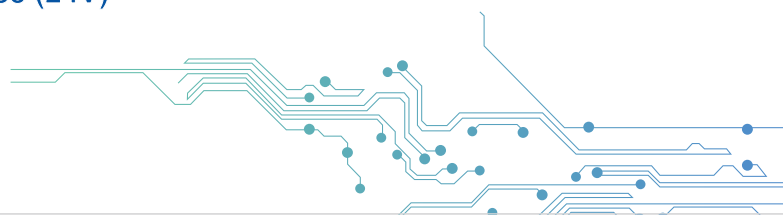
It is Integrated with in-built 35Amp Smart Solar Management Unit.

The Solar Sinewave Technology used, enhances the life of the battery and minimum effort has to be put for maintenance.

- Micro-Controller DSPIC Based Intelligent Control Design.
- Dual Charging, Mains Mode and Solar Mode.(Solar Panel upto 600W-12V model).
- Pure Sine Wave Regulated Output.
- Auto Reset Feature.
- Smart PWM Controlled multistage ATM (Automatic Trickle Mode) Charging.
- LCD and Graphical Display Indications (Status & Fault).
- Smart and Faster Overload Sense and Short Circuit Protection.
- Mains Input Voltage Range Selection.

---

**AVAILABLE MODELS -**  
1235 (12V), 1435 (12V), 2035 (24V) & 2335 (24V)





OFF GRID  
SOLAR  
SOLUTIONS  
SOLAR PCU PWM



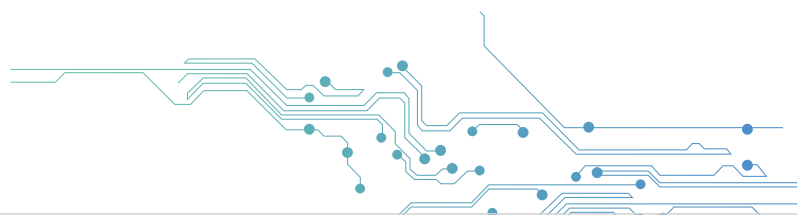
Hi-End Solar PWM PCU

Pure Sinewave Solar PCU PWM are based on DSP technology.

- State of the art Pure Sinewave technology.
- Smart Real Time Clock solar selection to maximise money saving
- User Friendly solar selection switch to save power.
- Battery charges even at 90V low voltage.
- Smart LCD displays total solar energy generation (in KWH).
- Battery Types support : Tubular, SMF, Flat Plate.
- Remote monitoring thru Wi-Fi /LAN/GPRS (optional feature).

---

**AVAILABLE MODELS -**  
2550/24V & 4050/48V



SOLAR  
SOLUTIONS  
PV MODULES

**MICROTEK**  
TECHNOLOGY WE LIVE



## SOLAR SOLUTIONS PV MODULES



### Polycrystalline PV Modules

Positive Power Tolerance Modules with highly classified A-Grade Solar Cells for lesser degradation and high energy and high conversion efficiency based on leading innovative photo voltaic technologies.

- Positive Power Tolerance Modules.
- Highly Classified A-Grade Solar Cells for Lesser Degradation and High Energy.
- Micro Crack Free Panels-100% EL Tested Before and After Lamination.
- Excellent Performance in Low Light.
- High Conversion Efficiency based on Leading Innovative Photo Voltaic Technologies.
- PID Free Modules with Long Term Reliability.
- Eco-Friendly.
- Excellent Performance in Low Light.

---

#### AVAILABLE MODELS -

40W/12V, 50W/12V, 75W/12V, 100W/12V, 165W/12V, 270W/24V, 330W/24V







### Mono Perc PV Modules

Positive Power Tolerance Modules with highly classified A-Grade Solar Cells for lesser degradation and high energy and high conversion efficiency based on leading innovative photovoltaic technologies.

- High Performance Mono Perc Cell.
- Exceptional performance even under low light conditions.
- High conversion efficiency saves installation space.
- Manufactured with premium grade input materials.

---

**AVAILABLE MODELS -  
390W/24V**



**OFF GRID  
SOLAR  
SOLUTIONS  
SOLAR SMU**



**Hi-End SMU with LCD Display**

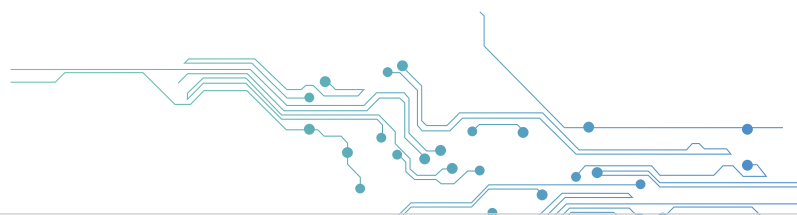
MICROTEK Micro-Controlled based High Efficiency, PWM SOLAR MANAGEMENT UNIT (SMU) is best suited for Low-Power Solar Applications.

Solar Management Unit convert your Normal External Battery UPS/Inverter into Solar UPS/Inverter.

- User Friendly LCD Display.
- Highly Efficient PWM Charging, ensures More Battery Life and Improved Solar System Performance.
- Automatically recognizes Day & Night.
- Mosfet Switching System.
- Priority Load Sharing through Solar during daytime, thereby saving your mains electricity.
- Compatible with all type of Batteries: SMF/Flat Plate/Tubular.

---

**AVAILABLE MODELS -  
LCD SMU 4850, 9650, 12050 & 18050**





SMU with LCD Display

MICROTEK Micro-Controlled based High Efficiency, PWM SOLAR MANAGEMENT UNIT (SMU) is best suited for Low-Power Solar Applications.

Solar Management Unit convert your Normal External Battery UPS/Inverter into Solar UPS/Inverter.

- User Friendly LCD Display.
- Highly Efficient PWM Charging, ensures More Battery Life and Improved Solar System Performance.
- Automatically recognizes Day & Night.
- Mosfet Switching System.
- Priority Load Sharing through Solar during daytime, thereby saving your mains electricity.
- Compatible with all type of Batteries: SMF/Flat Plate/Tubular.

---

**AVAILABLE MODELS -  
LCD SMU 1230, LCD SMU 1250, LCD SMU 2430 and LCD SMU 2450**





**SOLAR POWER  
GENERATING  
SYSTEM**



# SOLAR POWER GENERATING SYSTEM



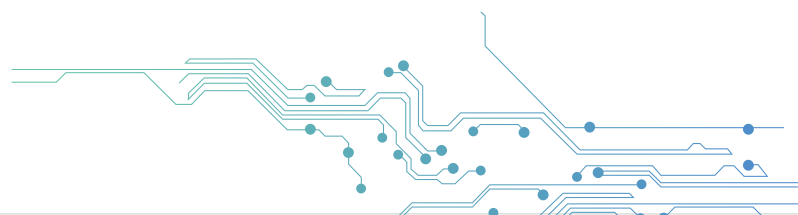
## Solar Power Generating System

### SOLAR ROOFTOP SOLUTIONS

#### STANDARD CAPACITY SOLUTIONS



#### HIGH CAPACITY SOLUTIONS



**ON GRID  
SOLAR  
SOLUTIONS**







Wifi Enabled

## Grid-Tied Solar System

A system with Grid-Tie functionality, it is an MPPT Based Technology Grid Tie Wall mounted Solar System that converts solar energy into electricity. It exports excess generation of electricity from the solar to the Utility Grid in case of an active Net Metering Policy in State.

- Max 97% Efficiency, Real Time Precise MPPT algorithm for BEST Performance.
- Plug & Play Easy Installation & Maintenance, IP65 for Free Site Selection.
- 4" LCD Display, Interface Selection, RS485 for System Monitoring.
- Intelligent Grid Management, Reactive Power Capability & Self Power Reducer when Over Frequency. Remote Active/Reactive Power Limit Control.
- SD Card inside for Life Long Data Storage upto 25 Years.

**Single Phase Models :GT 1KW ,GT 2.2KW, GT 3.3KW, GT 4KW, GT 5KW**

**Three Phase Models : GT 5.5KW, GT 8.8KW, GT 11KW, GT 12KW, GT 15KW, GT 20KW, GT 30KW, GT 40KW, GT 50KW**

**AUTOMATIC  
VOLTAGE  
STABILIZERS**



## **POWERING HOMES, EMPOWERING LIVES.**

Fluctuations cannot be stopped but they can most certainly be managed with advanced technology. Our range of energy efficient digital voltage stabilizers are specially designed not only to stabilize electrical fluctuations but also to give better performance & higher reliability and to save precious power.

- **A.C. Automatic Voltage Stabilizers**
- **Mains Automatic Voltage Stabilizers**
- **LED TV Automatic Voltage Stabilizers**
- **Refrigerator Automatic Voltage Stabilizers**





**AUTOMATIC  
VOLTAGE  
STABILIZERS  
FOR AC**



# AUTOMATIC VOLTAGE STABILIZERS FOR AC



**Pearl**  
AUTOMATIC VOLTAGE STABILIZER

**Smart**  
AUTOMATIC VOLTAGE STABILIZER

- Smart Time Delay
- Silver Caked Relay
- Intelli Auto Start
- Low & High Cut
- Intelli Thermal Management

## Automatic Voltage Stabilizers for AC

A complete range of energy efficient Automatic Voltage Stabilizers for air-conditioners with various working input ranges suitable for all kinds of power and voltage conditions. All Stabilizers for AC's also have a Smart Time Delay feature that gives breathing space & stabilizes the power supply, hence increasing the life of appliances.

| Models with Copper Transformer |               |              |                |
|--------------------------------|---------------|--------------|----------------|
| PEARL MCU 4170+                | 170V-270V     | Upto 1.5 ton | 3 Years Onsite |
| PEARL MCU 4150+                | 150V-280V     | Upto 1.5 ton | 3 Years Onsite |
| PEARL MCU 4130+                | 130V-300V     | Upto 1.5 ton | 3 Years Onsite |
| Models                         | Working Range | Applications | Warranty       |
| PEARL EM 4170+                 | 170V-270V     | Upto 1.5 ton | 3 Years Onsite |
| PEARL EM 4160+                 | 160V-285V     | Upto 1.5 ton | 3 Years Onsite |
| PEARL EM 4150+                 | 150V-280V     | Upto 1.5 ton | 3 Years Onsite |
| PEARL EM 4140+                 | 140V-290V     | Upto 1.5 ton | 3 Years Onsite |
| PEARL EM 4130+                 | 130V-300V     | Upto 1.5 ton | 3 Years Onsite |
| PEARL EM 4110                  | 110V-300V     | Upto 1.5 ton | 3 Years Onsite |
| PEARL EM 4090                  | 90V-300V      | Upto 1.5 ton | 3 Years Onsite |
| PEARL EM 5170+                 | 170V-270V     | Upto 2 ton   | 3 Years Onsite |
| PEARL EM 5150+                 | 150V-290V     | Upto 2 ton   | 3 Years Onsite |
| PEARL EM 5130+                 | 130V-300V     | Upto 2 ton   | 3 Years Onsite |
| PEARL EM 5090                  | 90V-300V      | Upto 2 ton   | 3 Years Onsite |

| For Air Conditioner |               |              |                |
|---------------------|---------------|--------------|----------------|
| Models              | Working Range | Applications | Warranty       |
| SMART EM 4170+      | 170V-270V     | Upto 1.5 ton | 3 Years Onsite |
| SMART EM 4160+      | 160V-285V     | Upto 1.5 ton | 3 Years Onsite |
| SMART EM 4150+      | 150V-280V     | Upto 1.5 ton | 3 Years Onsite |
| SMART EM 4140+      | 140V-290V     | Upto 1.5 ton | 3 Years Onsite |
| SMART EM 4130+      | 130V-300V     | Upto 1.5 ton | 3 Years Onsite |
| SMART EM 5170+      | 150V-270V     | Upto 2 ton   | 3 Years Onsite |
| SMART EM 5150+      | 150V-290V     | Upto 2 ton   | 3 Years Onsite |
| SMART EM 5130+      | 130V-300V     | Upto 2 ton   | 3 Years Onsite |



**MAINS  
AUTOMATIC  
VOLTAGE  
STABILIZERS**





# AUTOMATIC VOLTAGE STABILIZERS FOR MAINS

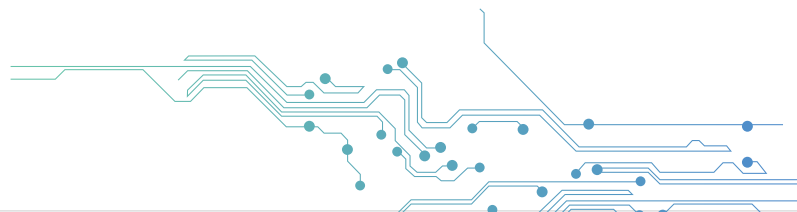


-   
Smart Time Delay
-   
Silver Caked Relay
-   
Intelli Auto Start
-   
Low & High Cut
-   
Intelli Thermal Management

## Automatic Voltage Stabilizers for Mains

Range of energy efficient Digital Voltage Stabilizers for Mains with Output Load Current Carrying Capacity from 6 A to 30 A, suitable for all kinds of power and voltage conditions. No need to install separate Stabilizers for appliances after installing in Mains. They have a separate MCB for bypassing the unit if required.

| For Mains |               |                 |                |
|-----------|---------------|-----------------|----------------|
| Models    | Working Range | Applications    | Warranty       |
| EML 2090  | 100V-290V     | General Purpose | 2 Years Onsite |
| EML 3090  | 90V-300V      | General Purpose | 2 Years Onsite |
| EML 5090  | 90V-300V      | General Purpose | 2 Years Onsite |
| EML 8090  | 100V-290V     | General Purpose | 2 Years Onsite |
| EML 10090 | 100V-290V     | General Purpose | 2 Years Onsite |



**LED TV  
AUTOMATIC  
VOLTAGE  
STABILIZERS**



# AUTOMATIC VOLTAGE STABILIZERS FOR LED



Silver Caked Relay



Intelli Auto Start



Low & High Cut

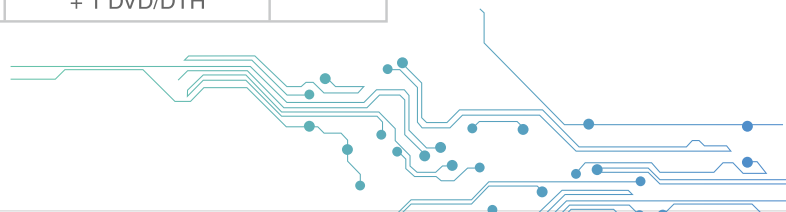


Intelli Thermal Management

## Automatic Voltage Stabilizers for LED TV

We have a complete Range of Energy Efficient Digital Voltage Stabilizers for TV/LCD/LED/DVD/DTH/Home Theatre System with Capacity, from 2.0 A to 3.0 A, suitable for all kinds of Power and Voltage Conditions. These MICROTEK Energy Efficient Digital Voltage Stabilizers are Perfect Guard for your equipment from Voltage fluctuations.

| For Audio Visual System |               |  |          |
|-------------------------|---------------|--|----------|
| Models                  | Working Range | Applications   | Warranty |
| EMT 0790                | 90V-300V      | 1 LED TV 81cm (32")<br>+ 1 DVD/DTH   | 3 Years  |
| EMT 1390                | 90V-300V      | 1 LED TV 122cm (48")<br>+ 1 DVD/DTH  | 3 Years  |
| EMT 2090                | 90V-300V      | 1 LED TV 165cm (65")<br>+ 1 DVD/DTH OR 1<br>LED/3D TV Upto<br>107cm (42") & Home<br>Theater Sys. & DVD/DTH | 3 Years  |
| EMT 3090                | 90V-290V      | 1 LED/3DTV 122cm (48")<br>& Home Theater System<br>+ 1 DVD/DTH   | 3 Years  |

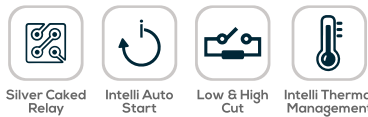




**REFRIGERATOR  
AUTOMATIC  
VOLTAGE  
STABILIZERS**



# AUTOMATIC VOLTAGE STABILIZERS FOR REF.

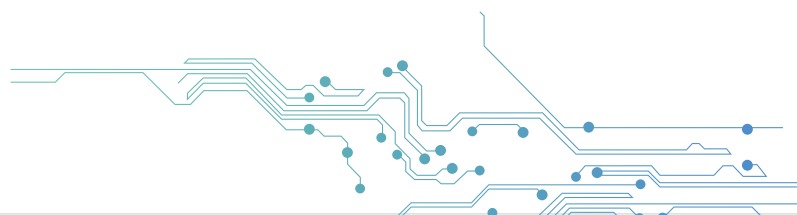


## Automatic Voltage Stabilizers for Refrierator

A range of energy efficient Digital Voltage Stabilizers for Refrigerators with Capacity from 2.0A to 4.0A, suitable for all kinds of power and voltage conditions They are the ideal guard for your equipment against voltage fluctuations.

### For Refrigerator / Deep Freezer

| Models            | Working Range | Applications  | Warranty | Models   | Working Range | Applications  | Warranty |
|-------------------|---------------|---|----------|----------|---------------|---|----------|
| SMART<br>EMR 2013 | 130V-295V     | 1 Refrigerator upto 300Ltr.                                     | 3 Years  | EMR 2013 | 130V-295V     | 1 Refrigerator upto 300Ltr.                                     | 3 Years  |
|                   |               |   |          | EMR 2090 | 90V-260V      | 1 Refrigerator upto 300Ltr.                                     | 3 Years  |
| SMART<br>EMR 2090 | 90V-260V      | 1 Refrigerator upto 300Ltr.                                     | 3 Years  | EMR 4013 | 130V-295V     | 1 Refrigerator upto 600Ltr.<br>OR<br>1 Deep Freezer upto 4Amps. | 3 Years  |
| SMART<br>EMR 4013 | 130V-295V     | 1 Refrigerator upto 600Ltr.<br>OR<br>1 Deep Freezer upto 4Amps. | 3 Years  | EMR 4090 | 90V-260V      | 1 Refrigerator upto 600Ltr.<br>OR<br>1 Deep Freezer upto 4Amps. | 3 Years  |





**POWER  
SOLUTIONS**





## WE ALWAYS KEEP YOU POWERED

We offer a range of power solutions to keep you, your home and your life always up and running. Owing to cutting-edge technologies, dedicated experts & best minds at work, all our products are highly efficient, giving you the optimal energy/power solutions as per your requirement, whether small or heavy-duty.

- Home UPS
- High Capacity UPS
- Line Interactive UPS
- Online UPS
- All In One Trolley

**HOME UPS  
SUPER POWER**

**No.1  
UPS  
BRAND\***



# **SUPER POWER**

High Performance UPS Series

**Cu** TECHNOLOGY  
COPPER WIRE REDEFINED



Super Power High Performance UPS Series comes with super technology that gives super longer power backup and super longer battery life.



**LOW WATT LOSS  
EI CORE**  
Saves Electricity



**DURA RETAIN  
TECHNOLOGY**  
Longer Backup



**RESETTABLE  
CIRCUIT BREAKER**  
Total Safety of  
connected Appliances



**CONSTANT CONTINUOUS  
REGULATED CHARGING**  
Saves Electricity  
while Charging



**INTELLICHARGE  
PULSE TECHNOLOGY**  
Faster Charging and  
More Battery Life



**AUTO RESET**  
During & After  
Overload Conditions

**AVAILABLE MODELS IN DIGITAL & SINEWAVE -  
700 (12V), 800 (12V), 900 (12V), 1000(12V) 1100 (12V), 1200(12V), 1700 (24V)**



HOME UPS  
ENERGY SAVER

**MICROTEK**  
TECHNOLOGY WE LIVE

No.1  
UPS  
BRAND\*



**ENERGY SAVER**

Environment Friendly UPS Series

**Cu** TECHNOLOGY  
COPPER WIRE REDEFINED



ENERGY SAVING  
TRANSFORMER INSIDE  
SAVE ENERGY | SAVE MONEY

Energy Saver Environment Friendly UPS Series is the most energy efficient UPS Series in its category. It is powered by the industry Lowest Watt Loss EI Core Transformer that helps in saving the maximum electricity and hence our hard earned money.



**LOWEST WATT  
LOSS EI CORE**

Energy Saving  
Transformer



**ZERO POWER  
SWITCHING**

Energy Saving While  
on Backup Mode



**DIGI FUZZI  
LOGIC CHARGING**

Energy Saving During  
Battery Charging



**HIGH & STANDARD  
CHARGING OPTION**

For Quick Battery  
Charging



**UPS & INVERTER  
MODE**

For Running IT &  
Home Load



**COMPATIBLE WITH  
ALL BATTERY TYPES**

Tubular, Local &  
Flat Plate

**AVAILABLE MODELS IN DIGITAL & SINEWAVE -  
825(12V), 1025(12V), 1225(12V) & 1825(24V)**





HOME UPS  
iMERLYN

No.1  
UPS  
BRAND\*



# iMerlyn

INTELLIGENT PREMIUM SERIES

**Cu** TECHNOLOGY  
COPPER WIRE REDEFINED

5 STAGE  
BATTERY  
CHARGING

HEAVY  
LOAD  
HANDLING

iMerlyn Intelligent Premium UPS Series that has heavy load handling capacity and adds to the beauty of your home with its inspiring looks. Its 5 stage battery charging mechanism keeps the battery healthy and also provides longer battery life.



HIGH VOLTAGE  
SURGE PROTECTION



RE-SETTABLE  
CIRCUIT BREAKER



HIGH PEAK CURRENT  
HANDLING & THERMAL  
PROTECTION



HIGH & STANDARD  
CHARGING OPTION  
FOR QUICK BATTERY  
CHARGING



UPS & INVERTER  
MODE FOR  
RUNNING IT &  
HOME LOAD



COMPATIBLE WITH  
ALL BATTERY TYPES  
TUBULAR, LOCAL &  
FLAT PLATE

AVAILABLE MODELS IN DIGITAL & SINEWAVE -  
850 (12V), 1050 (12V), 1250 (12V) & 1850 (24V)



**HOME UPS  
SMART HYBRID  
& HEAVY DUTY**



**SmartHybrid**

PERFECT COMBINATION OF DIGITAL + SINEWAVE TECHNOLOGY



- HIGH & STANDARD CHARGING OPTION**  
For Quick Battery Charging
- COMPATIBLE WITH ALL BATTERY TYPES**  
Tubular, Local & Flat Plate
- IN-BUILT BYPASS SWITCH**  
Enables to Isolate the UPS from Mains, whenever needed
- UPS & INVERTER MODE**  
For Running IT & Home Load
- FAST CHARGING AT 90V**  
For Rural Area Application
- IN-BUILT MCB**  
Total Safety from Short Circuit

Heavy Duty UPS Series is a High Torque Performance UPS Series which is specially designed to handle heavy loads easily.



Smart Hybrid UPS Series is a Perfect Combination of Digital & Sinewave Technologies that gives you best of both the worlds - Noiseless performance & more load handling capacity.



- IN-BUILT BYPASS SWITCH**  
Enables to Isolate the UPS from Mains, whenever needed
- HIGH & STANDARD CHARGING OPTION**  
For Quick Battery Charging
- IBGM**  
Intelli Battery Gravity Management
- UPS & INVERTER MODE**  
For Running IT & Home Load
- UNIQUE ULTRA SONIC SWITCHING**  
For Noiseless Performance
- COMPATIBLE WITH ALL BATTERY TYPES**  
Tubular, Local & Flat Plate

**Heavyduty**

Hi-Torque Performance UPS Series

AVAILABLE MODELS -  
875(12V), 1075(12V), 1275(12V) & 1875(24V)

AVAILABLE MODELS -  
1550 (12V), 2350 (24V) & 2350 SW (24V)



HOME UPS  
LUXE

No.1  
UPS  
BRAND\*



**LUXE**  
LCD HOME UPS

**Cu**  
COPPER  
WIRE  
**TECHNOLOGY  
REDEFINED**

LCD DISPLAY

RUNNING  
LOAD  
STATUS

BACKUP  
TIME

BATTERY  
CHARGING  
TIME

LUXE LCD Home UPS Series is India's Most Intelligent & Smartest Home UPS with in-built micro computer that promises to always keep your home illuminated even during the power cuts.

It boasts of a beautifully designed power button and a smart LCD Display that shows you the running load status, backup time and battery charging time.



**ADVANCED RESETTABLE  
CIRCUIT BREAKER**

Total Safety of  
connected Appliances



**HIGH & STANDARD  
CHARGING OPTION**

For Quick Battery  
Charging



**UPS & INVERTER  
MODE**

For Running IT &  
Home Load



**COMPATIBLE WITH  
ALL BATTERY TYPES**

Tubular, Local &  
Flat Plate

**AVAILABLE MODELS -**

1000 (12V), 1200 (12V), 1400 (12V) & 1900 (24V)





**HIGH  
CAPACITY UPS**

**MICROTEK**  
TECHNOLOGY WE LIVE



**JUMBO** UPS  
HIGH CAPACITY SERIES

**BINA  
DIESEL KA  
GENERATOR**

### Jumbo UPS High Capacity Series

A series designed especially for small offices and home applications, it is Micro Processor based Intelli Pure Sinewave using latest state-of-the-art technology UPS for better performance and higher reliability. Ratings starting from 2.2KVA(24V) to 10KVA(180V)

- Advanced Battery Management (ABM) for Longer Battery Life & Quick Charging.
- Micro Processor based.
- Static UPS with LCD Display
- Pure Sinewave Output
- Smart Overload Sense and Short Circuit Protection
- Generator Compatible



AUTO  
RESET



CIRCUIT  
BREAKER



POWER  
SAVING



Air Conditioner



Computer & IT



Water Motor



Petrol Pump



Shopping Mall



Photocopier

#### AVAILABLE MODELS -

MOSFET Based - 2500 (24V), 3000+ (24V), 3000 (36V), 3500 (36V), 4000(48V), 5500(48V), 6000(72V),  
IGBT Based - 6500i (96V), 9000i (120V), & 11000i (180V)



**LINE  
INTERACTIVE  
UPS**



## LINE INTERACTIVE UPS



### LINE INTERACTIVE UPS **Legend**



#### Legend Line Interactive UPS with In-Built Battery Models

Microtek has complete range of Line Interactive UPS from 650VA(12V) to 1600VA(24V). The UPS are your ideal choice to provide complete protection to your Computers. Microtek is the only brand to manufacture these in India.

- Micro Processor based Load Sensing System, to sense Micro Power Consumption Devices.
- Long Backup for Micro Power Consumption Devices.
- Also suitable for Computer & other IT loads with normal Backup.
- Wide INPUT Range 142V~282V AC.
- Auto Restart while AC is recovering.
- Specially made Heavy Duty UPS for Indian Power Conditions.
- Generator / Inverter Compatible.



Security  
& Surveillance



Medical  
Equipments



Broadcast  
Studio



WIFI  
Modems

**AVAILABLE MODELS -**  
Single Battery Model: 650, 750M  
Double Battery Model: 1000, 1600





## LINE INTERACTIVE UPS



**DesirePRO+**  
LINE INTERACTIVE UPS

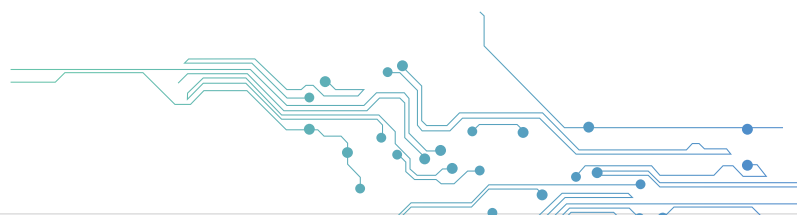
### Long Backup External Battery UPS

Microtek has complete range of Line Interactive UPS from 1000VA(12V) to 2000VA(24V). The UPS are your ideal choice to provide complete protection to your Computers. Microtek is the only brand to manufacture these in India.

- Excellent microprocessor control guarantees High Reliability.
- Boost and buck AVR for Voltage Stabilization.
- Selectable Charging Current.
- Auto Restart while AC is recovering.
- Simulated Sine wave.
- Off-mode Charging.
- Cold Start function.

---

**AVAILABLE MODELS -  
1000VA (12V) to 2000VA (24V)**



ONLINE UPS



**ONLINE  
UPS**

**E2** SERIES



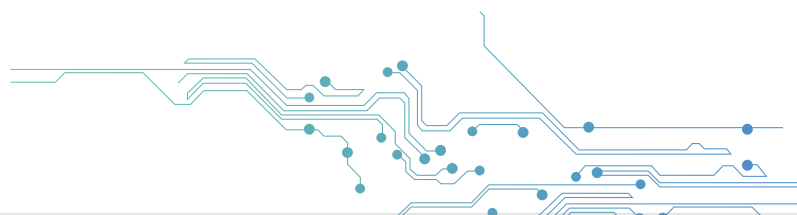
### Energy Efficient High Frequency Online UPS

Microtek High Frequency Online UPS provides Uninterrupted Pure Power for Critical Applications such as Computer Network, Servers, Cyber Cafes, ATM Machines and CCTV Camera etc.

- High Frequency and Hybrid Double Conversion Online Technology.
- High End IGBT Based.
- High End Micro Controller Based.
- Wide Input Voltage Range.
- Advanced PFC Technology.
- Advanced Battery Management.
- Automatic Battery Charging in UPS Off Mode.
- Short Circuit and Overload Protection.
- Over Temperature Protection.
- EMI / RFI Noise Filter
- LCD/LED Display simultaneously
- Different Output Voltage settings.

---

**AVAILABLE MODELS -  
1KVA (24V) IB & 1KVA (36V)**





**ONLINE  
UPS**



## **MAX+SERIES**

High Performance High Frequency Series

Microtek High Frequency Online UPS provides Uninterrupted Pure Power for Critical Applications such as Computer Network, Servers, Cyber Cafes, ATM Machine, Labs etc.

- High Frequency and Hybrid Double Conversion Online Technology.
- High End IGBT Based.
- High End Micro Controller Based.
- Wide Input Voltage Range.
- Advanced PFC Technology.
- Advanced Battery Management.
- Automatic Battery Charging in UPS Off Mode.
- Short Circuit and Overload Protection.
- Over Temperature Protection.
- EMI / RFI Noise Filter
- LCD/LED Display simultaneously
- Different Output Voltage settings.

---

### **AVAILABLE MODELS -**

**Inbuilt Battery - 1KVA/36V IB, 2KVA/72V IB, 3KVA/72V IB**

**External Battery - 1KVA/36V, 2KVA/72V, 3KVA/72V, 6KVA/192V, 10KVA/192V**

**With Isolation Transformer - 1KVA ISO TX, 2KVA ISO TX, 3KVA ISO TX**

A decorative graphic at the bottom right of the page, showing a stylized circuit board with various components and traces in blue and green.

**ONLINE  
UPS**



## MAX LiFe SERIES

Online UPS for Lithium Ion Battery Applications for longer back up

A wide range of Online UPS from 1KVA to 40KVA based on the world's latest technology to meet the harsh environmental and worst power conditions for applications ranging from small offices to space critical mission. It is compatible with Lithium-ion Battery.

- True double-conversion.
- Sine-wave Output.
- Output Power Factor 1.0.
- Configurable Charging Current via LCD Settings.
- Compatible with Generator.
- Full Bridge inverter design to support half-wave load and unbalanced load.
- Cold Start Capability.
- Overload and Short Circuit Protection.
- Very Powerful AC Charger at 60A.
- Optional Parallel Operation up to 9 units for Single Phase and Three Phase Applications.
- Common 48V DC Battery Pack for the Parallel System.

**AVAILABLE MODELS -**  
1KVA/48V, 2KVA/48V, 3KVA/48V, 5KVA/48V



**ONLINE  
UPS**



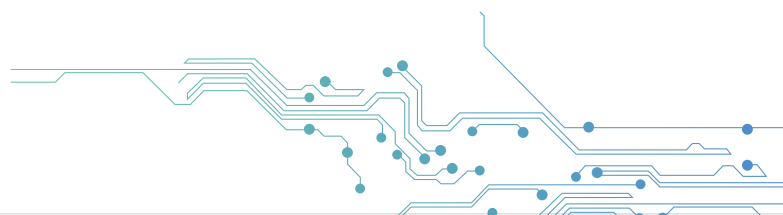
## *i*MAXX SERIES

Intelligent Performance Low Frequency Series

Microtek offers Wide Range of Online UPS from 1KVA to 40KVA based on World's Latest Technology to meet the harsh Environmental and worst Power Conditions for Applications from Small Office requirement to Space Critical Missions with wide variety of Backup Range to meet the needs of every individual.

- DSP Technology with IGBT based inverter.
- Smart LCD Display for Real-time information.
- Inbuilt OVCD with Surge Protection.
- EMI/RFI Noise Filter.
- CVCF Operational without Battery.
- Hot Stand-by, Cold Start & RS-232/USB Port features available.
- Alarm for Mute Mode & SNMP Card (Optional).
- Over Temperature Indication.
- Configurable Output Voltage Settings.

**AVAILABLE MODELS -  
IN BUILT ISOLATION TRANSFORMER BASED (1PH:1PH)  
5.5KVA/192V, 7.5KVA/192V, 10KVA/192V**





**ONLINE  
UPS**



**iMAXX** SERIES

### Intelligent Performance Low Frequency Series

Microtek offers Wide Range of Online UPS from 1KVA to 40KVA based on World's Latest Technology to meet the harsh Environmental and worst Power Conditions for Applications from Small Office requirement to Space Critical Missions with wide variety of Backup Range to meet the needs of every individual.

- DSP Technology with IGBT based inverter.
- Smart LCD Display for Real-time information.
- CVCF Operational without Battery.
- Immune to Reverse Phase Sequence & no Neutral Operation.
- Hot Stand-by, Cold Start features available.
- Conformal Coated PCB Assemblies to withstand harsh environment.
- Alarm for Mute Mode & SNMP Card.
- Over Temperature Indication.
- Output Frequency fixed at 50Hz or can be synchronized with Input frequency.
- Configurable Output Voltage Settings.
- Input filter for Power Factor 0.9 available.

**AVAILABLE MODELS -  
IN BUILT ISOLATION TRANSFORMER BASED (3PH:1PH)  
10KVA/192V, 15KVA/360V, 20KVA/360V**



**ONLINE  
UPS**

**MICROTEK**  
TECHNOLOGY WE LIVE



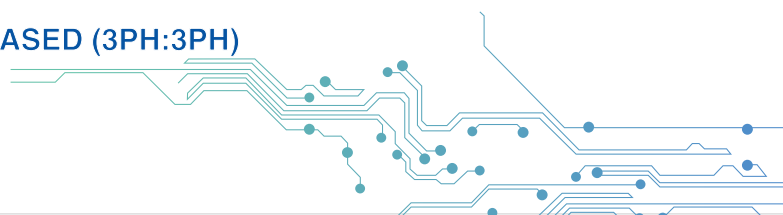
**iMAXX** SERIES

### Intelligent Performance Low Frequency Series

Microtek offers Wide Range of Online UPS from 1KVA to 40KVA based on World's Latest Technology to meet the harsh Environmental and worst Power Conditions for Applications from Small Office requirement to Space Critical Missions with wide variety of Backup Range meet the needs of every individual.

- DSP Technology with IGBT based inverter.
- Smart LCD Display for Real-time information.
- CVCF Operational without Battery.
- Immune to Reverse Phase Sequence & no Neutral Operation.
- Hot Stand-by, Cold Start features available.
- Conformal Coated PCB Assemblies to withstand harsh environment.
- Alarm for Mute Mode & SNMP Card.
- Over Temperature Indication.
- Output Frequency fixed at 50Hz or can be synchronized with Input frequency.
- Configurable Output Voltage Settings.
- Input filter for Power Factor 0.9 available.

**AVAILABLE MODELS -  
IN BUILT ISOLATION TRANSFORMER BASED (3PH:3PH)  
10KVA/360V, 20KVA/360V, 30KVA/360V**



**ONLINE  
UPS**



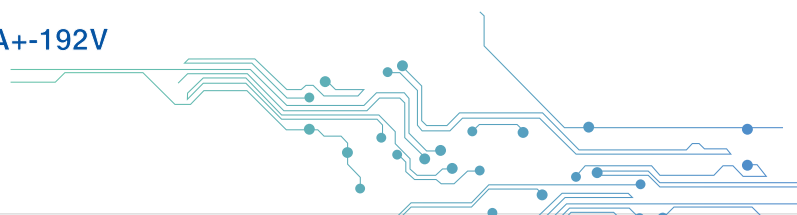
## **Super MAX+ SERIES**

Super Performance High Frequency Series

Microtek offers Wide Range of Online UPS in 20 KVA, 30 KVA & 40 KVA based on World's Latest Technology to meet the harsh Environmental and worst Power Conditions for Applications from Small Office requirement to Space Critical Missions with wide variety of Backup Range to meet the needs of every individual.

- DSP Technology with IGBT based PFC & inverter section.
- Unity Output Power Factor.
- 3-Level IGBT Inverter design Maximizes Efficiency.
- Smart 4.3" Touch Panel LCD Display for Real-time information for measurement & adjustment of maximum parameters.
- Active Power Factor Correction in all 3-Phases.
- EMI Protection available at Input & Output.
- 50Hz/60Hz Frequency Converter mode.
- ECO mode operation for Energy Saving.
- Adjustable Battery Numbers (from 32 to 40 batteries).

**AVAILABLE MODELS -**  
20KVA+-192V , 30KVA+-192V and 40KVA+-192V

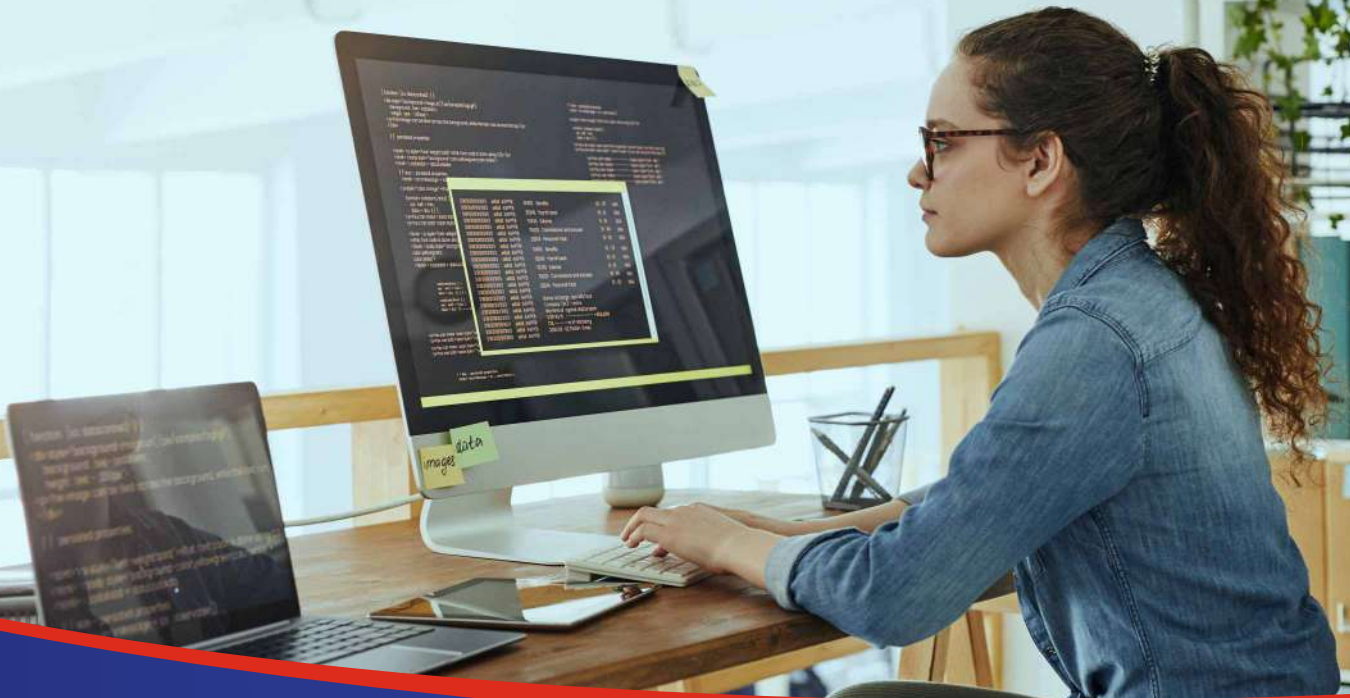




ONLINE  
UPS

**MICROTEK**  
TECHNOLOGY WE LIVE

EVERY CRITICAL  
APPLICATION  
NEEDS A RELIABLE  
**BACKUP PARTNER**



ALL-IN-ONE  
TROLLEY



**ALL-IN-ONE  
TROLLEY**



**NO  
ALL IN ONE**



AIO (All-in-One) Trolley

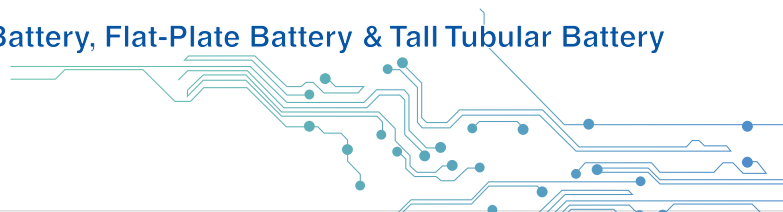
Elegant, moveable, safe and made from long-lasting material, they protect your floor from acid spillage, in turn protecting the environment. These also take very little space because the battery is kept inside the trolley and the UPS is placed on top of it.

- Highly durable
- Protects the Floor from acid spillage and overflow
- Protection from Shocks and Safety for Children
- Extra strong & convenient to use
- 5 wheels including one wheel in the centre to give maximum support to battery
- Elegant looks for your Home
- Side ventilation outlets
- Open back for ease in water topping

---

**USEFUL FOR -**

**Single Battery, Double Battery, Jumbo Battery, Flat-Plate Battery & Tall Tubular Battery**





E-RICKSHAW  
CHARGER

# TURBO CHARGE



## E-RICKSHAW CHARGER



# TURBO CHARGE



SAVES  
ELECTRICITY



FAST  
CHARGING



LOW CUT AND  
HIGH CUT

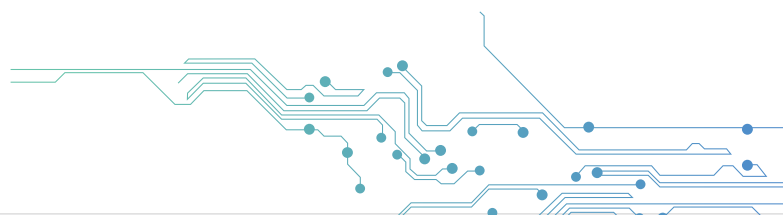


### E-Rickshaw Battery Charger

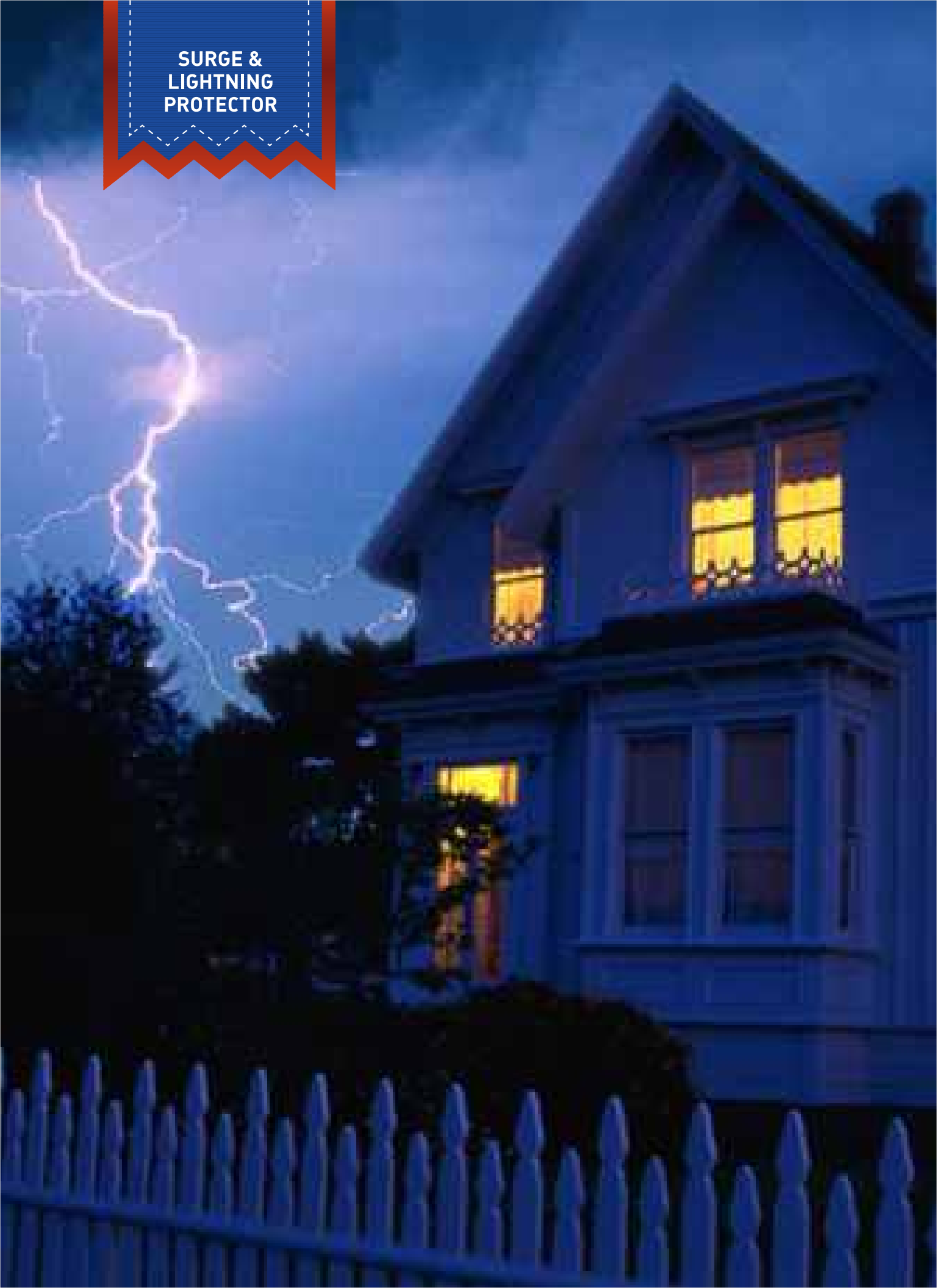
Technology that charges up every journey, E-rickshaw is the new lifeline that helps people travel shorter distances in lesser time. It also helps in giving livelihood to many families. Our E-rickshaw battery charger gives you turbocharging. It retains the charge of the battery for long hours, which helps cover extra miles.

- Quick Cut Technology.
- Multi-Stage Charging with Micro Controller Based Monitoring & Control.
- Suitable for All Battery Brands.
- 30% Faster Charging.
- Stabilizes Battery Gravity.
- Extends Battery Life.
- Over Temperature Protection.
- Gives Extra Mileage.
- Less Water Topping.
- Wide Oper. AC Input Range 90V-300V.
- Highest Power Factor up to 0.99.
- User-Friendly LED Indicators, show Battery Charging Status in percentage.
- In-built Overcharge Protection.
- Reverse Battery Polarity Protection.

**AVAILABLE MODELS -  
TC-4816Q**



**SURGE &  
LIGHTNING  
PROTECTOR**





## SURGE & LIGHTNING PROTECTOR



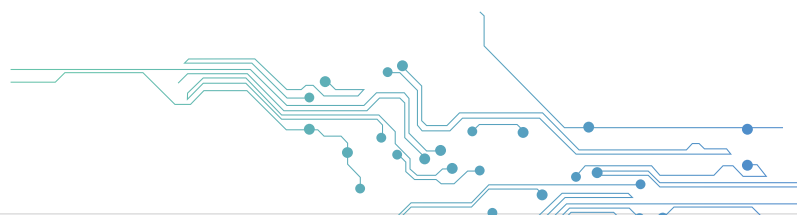
### Surge and Lightning Protector

We are dedicated to supplying surge protective device. Equipped with simulated lightning strike equipment to detect the performance of our effective surge & lightning protector

- Point-of-use Application (type III SPD).
- Continuous Rated Current Of 6A.
- Maximum Discharge Current Rating Of 10KA For Surge Handling.
- Voltage Protection Of 390 X 3 Joules..
- Nominal Continuous Operating Voltage Of 240VAC  $\pm$  15%.
- EMI/RFI Filtering For Connected Load.

---

**AVAILABLE MODELS -  
MLP 6A**





**Microtek International Pvt. Ltd.**

H-57, Udyog Nagar, Rohtak Road, Delhi-110041

Customer Care Number: 72 83 83 83 83 Email us : [ho@microtekdirect.com](mailto:ho@microtekdirect.com)